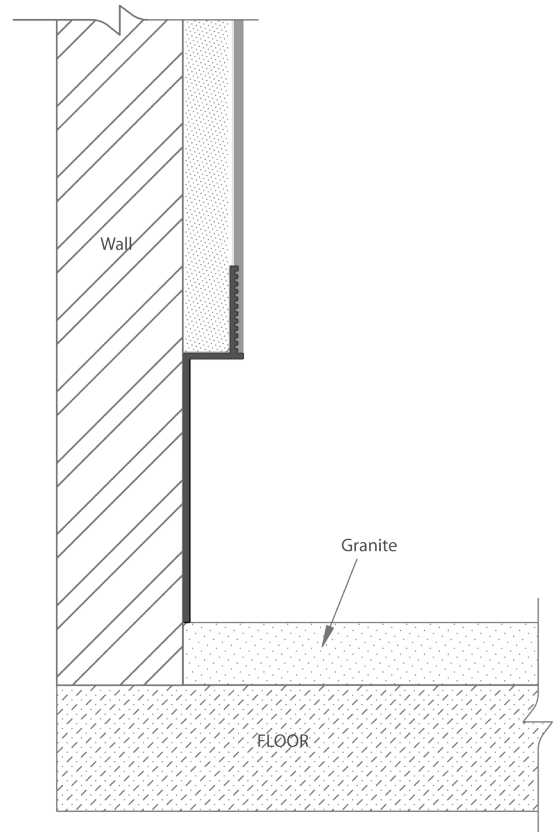


SKIRTING SOFTLINE SERIES



Size	Product Code
50 mm	SKTAL 1051
75 mm	SKTAL 1052
100 mm	SKTAL 1053

Standard Length
3048mm per profile

Available in different finishes – Anodizing, Powder Coating, PVDF & Wooden Finish.

Available in silver and black shade. Custom shades available on demand.



Key Features

Purpose & Functionality

- Provides a sleek and protective transition between walls and floors.
- Prevents damage to lower walls from impact, moisture, and dirt.
- Enhances the durability and aesthetics of interior spaces.

Material & Durability

- Made from high-quality aluminum, ensuring corrosion resistance and longevity.
- Lightweight yet strong, perfect for both commercial and residential applications.

Design Benefits

- Minimalistic and modern design that complements various interior styles.
- Smooth, seamless integration with drywall, wood, and tile finishes.

Installation & Versatility

- Easy to install with concealed fasteners for a clean appearance.
- Suitable for offices, hotels, hospitals, and high-traffic areas.